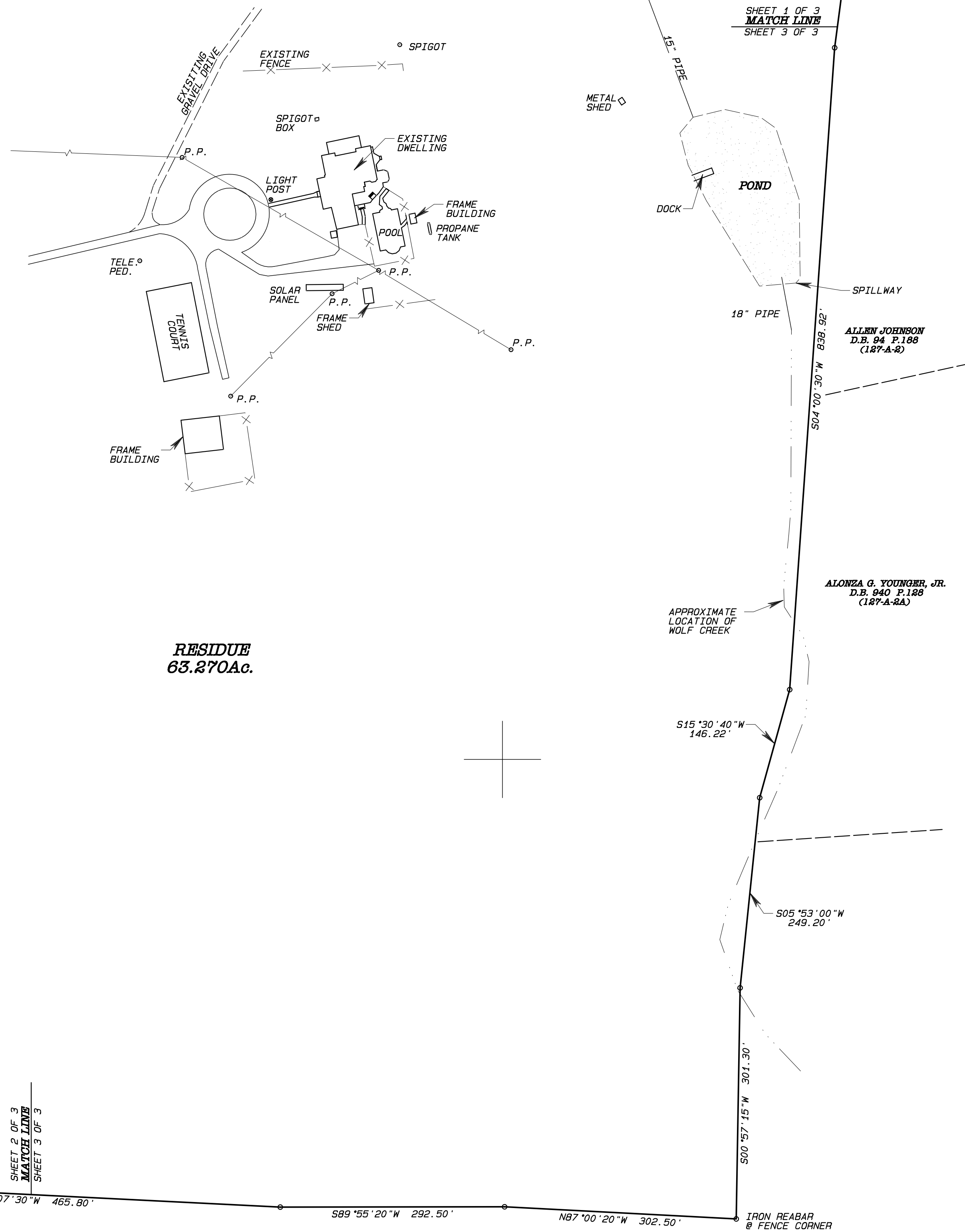


SHEET 1 OF 3  
MATCH LINE  
SHEET 3 OF 3



**RESIDUE**  
63.270Ac.

ALLEN JOHNSON  
D.B. 94 P.188  
(187-A-2)

ALONZA G. YOUNGER, JR.  
D.B. 940 P.128  
(187-A-2A)

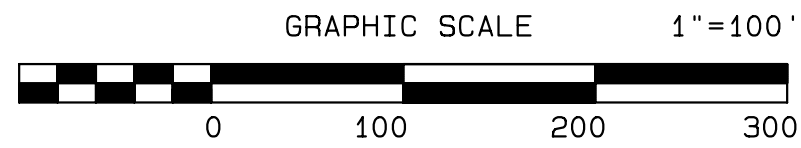
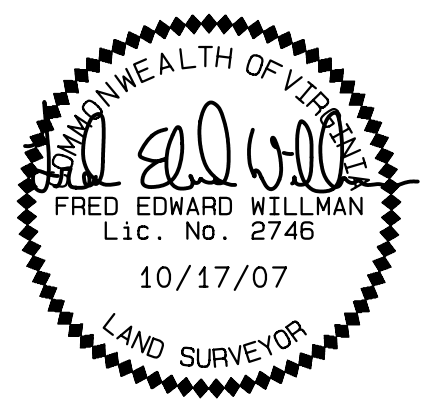
SHEET 2 OF 3  
MATCH LINE  
SHEET 3 OF 3

NB7°07'30"W 465.80'  
S89°55'20"W 292.50'  
NB7°00'20"W 302.50'  
S00°57'15"W 301.30'  
S05°53'00"W 249.20'  
S15°30'40"W 146.22'  
18" PIPE  
1.5" PIPE  
IRON REABAR @ FENCE CORNER

I HEREBY CERTIFY, TO THE BEST OF MY KNOWLEDGE AND BELIEF, THAT THE REQUIREMENTS OF THE BOARD OF SUPERVISORS AND ORDINANCES REGARDING THE PLATTING OF SUBDIVISIONS WITH THE COUNTY HAVE BEEN FOLLOWED AND THAT, THE CORNER MARKERS SHOWN ON THIS PLAT ARE IN PLACE OR WILL BE INSTALLED AT A LATER DATE. THIS PLAT WAS PREPARED OCTOBER 17, 2007 FROM AN ACTUAL AND CURRENT FIELD SURVEY MADE UNDER MY SUPERVISION AND COMPLIES WITH THE MINIMUM STANDARDS AND PROCEDURES ESTABLISHED BY THE VIRGINIA STATE BOARD OF ARCHITECTS, PROFESSIONAL ENGINEERS, LAND SURVEYORS, CERTIFIED INTERIOR DESIGNERS AND LANDSCAPE ARCHITECTS TO THE BEST OF MY KNOWLEDGE AND BELIEF.

ROY O. STEVENS  
INSTR. NO. 060019827  
(187-A-3)

### SHEET 3 OF 3



**ACRES OF VIRGINIA, INC.**  
SURVEYORS\*ENGINEERS\*PLANNERS & SOIL CONSULTANTS  
404 CLAY STREET  
LYNCHBURG, VA. 24504  
OFFICE (434) 528-4674  
FAX (434) 845-1048  
www.acresofvirginia.com

AMHERST OFFICE:  
SURVEYING & PLANNING  
357 S. MAIN STREET  
AMHERST, VA. 24521  
OFFICE (434) 946-5540

PLAT SHOWING  
PARCEL "A", PARCEL "B"  
AND RESIDUE  
PROPERTY OF:  
**SPAIN ENTERPRISES, LLC.**  
CENTER DISTRICT & PEAKS DISTRICT  
BEDFORD COUNTY, VIRGINIA  
**SURVEYED FOR: SPAIN ENTERPRISES, LLC.**

SCALE: 1"=100' DATE: OCTOBER 17, 2007  
COMM. NO. 07830/PLAT07830-SERVER-NEWJOBS2007  
TAX MAP NO. 127-A-1 DATA COLLECTOR